



HILLSIDE GARDENS

EDGWARE, HA8 8HA

£810,000
FREEHOLD

Taylor Hawkins proudly presents this 4 bedroom semi detached house with a garage, located in the highly sought after Hillside Gardens. The property offers generous living space, including a convenient downstairs toilet. The large garden provides ample outdoor space, with further potential for extension and a loft conversion (subject to planning permission).

Upstairs, the bedrooms are spacious, complemented by two bathrooms and a well sized landing area. Situated on a quiet and charming road, the property is within easy reach of local shops, amenities, and excellent transport links.

Don't miss out—call today to arrange a viewing!



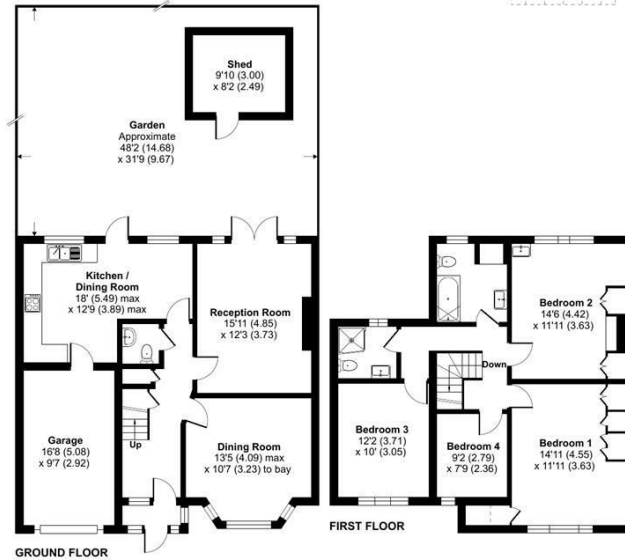
TAYLOR HAWKINS
Estate Agents
0208 958 2222 / TaylorHawkins.co.uk

Hillside Gardens, Edgware, HA8

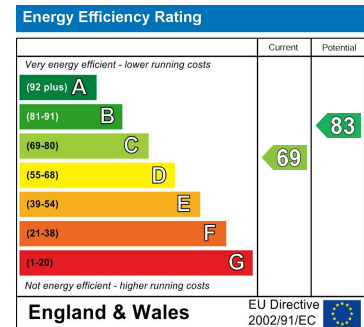
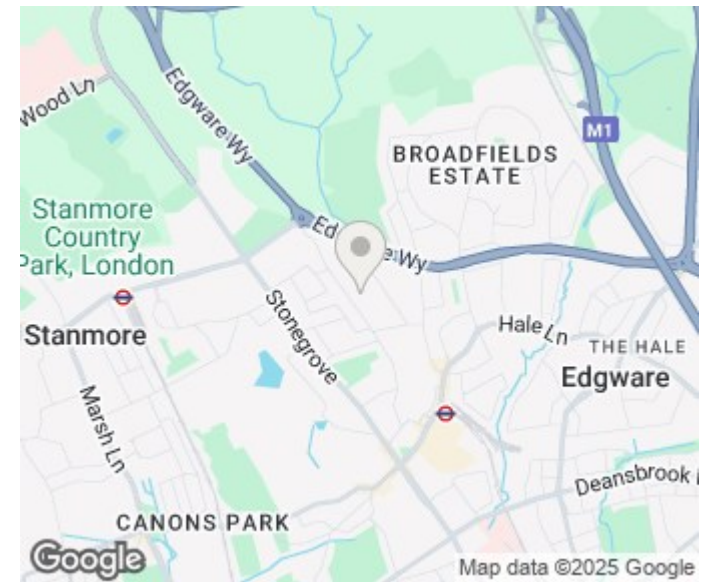
Approximate Area = 1488 sq ft / 138.2 sq m
 Limited Use Area(s) = 8 sq ft / 0.7 sq m
 Garage = 160 sq ft / 14.8 sq m
 Shed = 81 sq ft / 7.5 sq m
 Total = 1737 sq ft / 161.3 sq m

For identification only - Not to scale

Denotes restricted
head height



Floor plan produced in accordance with RICS Property Measurement 2nd Edition.
 Incorporating International Property Measurement Standards (IPMS2 Residential). © nrdhcom 2024.
 Produced for Taylor Hawkins. REF: 1219534



Agents Note: Whilst every care has been taken to prepare these particulars, they are for guidance purposes only. All measurements are approximate and are for general guidance purposes only and whilst every care has been taken to ensure their accuracy, they should not be relied upon and potential buyers/tenants are advised to recheck the measurements

Edgware Sales
 58 Edgware Way
 Edgware
 Middlesex
 HA8 8DJ

020 8958 2222
property@taylorhawkins.co.uk
<https://taylorhawkins.co.uk/>



TAYLOR HAWKINS
 Estate Agents
 0208 958 2222 / [TaylorHawkins.co.uk](https://taylorhawkins.co.uk)